

BlackBerry Device Backup and Restore

This guide explains how to backup and restore a BlackBerry device.

Backup Your BlackBerry Data

Connect the BlackBerry smartphone to the computer that is running the **BlackBerry Desktop Manager** using a USB cable.

1. Open the **BlackBerry Desktop Manager** and Click on the **Device** menu at top. Next, select **Back up...** in the drop-down menu. [Figure 1-1]
2. You have the option of backing up all device data, or selected data.
 - To perform a full backup, verify that **Full (all device data and settings)** is selected for the backup type.
 - To perform a backup of specific data, select **Custom (selected data only)**, and then **check** the box for each type of data you wish to back up. [Figure 1-2]
3. Enter a name for your backup file in the **File name** field, select a location to save the backup file, and click **Back up**. You will then see a progress window. You will receive a confirmation when backup is complete.

Restore Your BlackBerry Data From a Backup File

1. Connect your new BlackBerry smartphone to the computer that is running the **BlackBerry Desktop Manager** using a USB cable.
2. Open the **BlackBerry Desktop Manager** and Click on the **Device** menu at top. Next, select **Restore...** in the drop-down menu.
3. You have the option of restoring all device data, or selected data:
 - To restore all device data, select the backup file that you wish to restore by clicking on it, and then make sure **All device data and settings** is selected under **Select Data to Restore**.
 - To restore specific device data, select the backup file that you wish to restore by clicking on it, then click on **Select device data and settings** under **Select Data to Restore**. Then, **check** the box for each type of data you wish to restore. [Figure 1-3]
4. Click on **Restore**, and then click **Yes** to continue. Lastly, click on **Close** on the **Restore Complete** confirmation window. Your restored data will now appear on your new BlackBerry device.



Figure 1-1

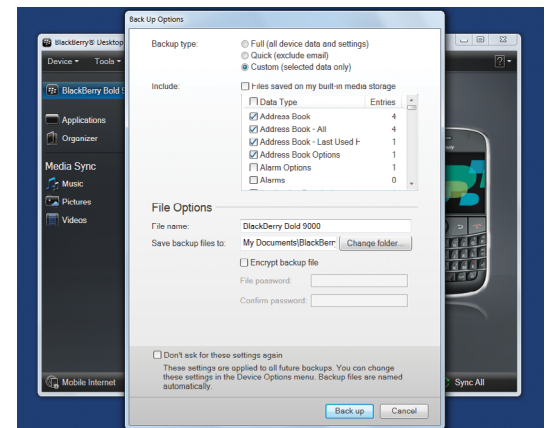


Figure 1-2

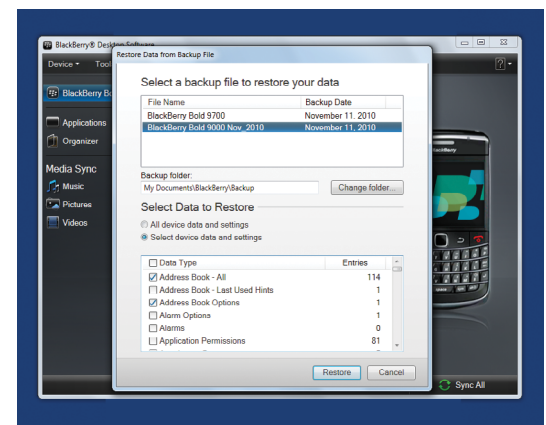


Figure 1-3