

BlackBerry BES MDS-CS Guide (For OS 7 & Earlier)

Accessing Shared Files via MDS-CS on the BlackBerry

The BlackBerry MDS-CS (Mobile Data System-Connection Service) connects wireless applications on BlackBerry devices to the applications on an organization's application servers or web servers, permitting behind-the-firewall access to files and web applications from BlackBerry devices. This will (for example) allow you to access your private Intranet without a VPN connection, as well as any internal websites that can be accessed from the MDAemon server.

The BlackBerry MDS Connection Service also receives and responds to web requests from the BlackBerry Browser and other BlackBerry Applications, so that users can view Internet and intranet content on their BlackBerry devices.

Enabling MDS-CS in MDAemon

By default, MDAemon's MDS-CS runs on port 8080. You can enable MDS-CS within the MDAemon GUI:

1. Select the **Setup** menu in **MDaemon**.
2. Click on **Mobile Device Management**.
3. Click on **MDS-CS** under **BlackBerry Enterprise Server** in the left-hand navigation menu.
4. Check the box **Enable MDS-CS service**. [Figure 1-1]
5. Enter **8080** in the **Web server listens on port** field.
6. In the **Default Authentication Domain** field, enter the Windows domain name (if using NT authentication) or enter the machine name (if using a workgroup).
7. Click **Apply** and **Ok**.

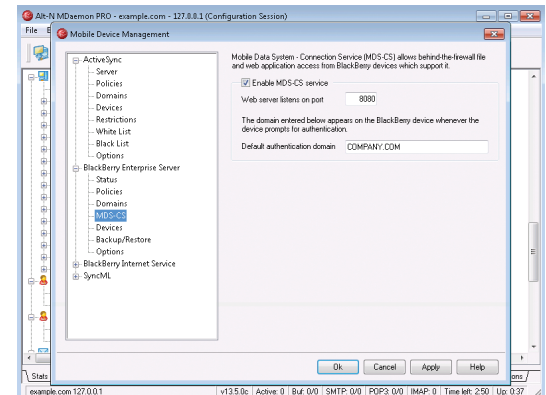


Figure 1-1

File Sharing Setup

Note: Windows Server 2003 screens shown. The following steps may vary slightly for other versions of Windows.

1. Create or locate the folder you wish to share on the MDAemon server.
2. Right-click on the selected folder and select **Sharing and Security**. [Figure 1-2]
3. Enable the option **Share this folder**. [Figure 1-3]
4. Give the folder a share name in the **Share name** field. This is the name that will be entered on the BlackBerry device when accessing this folder's contents. [Figure 1-3]
5. Click on the **Permissions** button and select **Read** under the **Allow** column for all authorized users. [Figure 1-4]
6. Click **Apply** and **OK**.

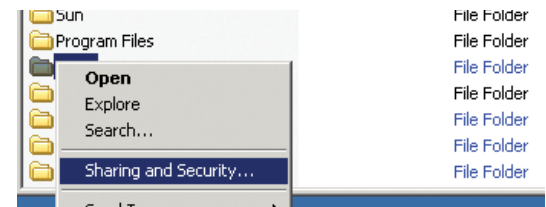


Figure 1-2

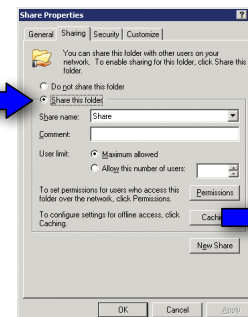


Figure 1-3

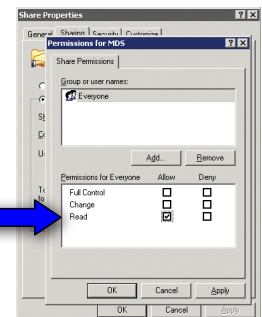


Figure 1-4

Accessing Shared Files from Your BlackBerry

1. Open the **Applications** folder on your BlackBerry smartphone. [Figure 2-1]
2. Open the **Files** application. [Figure 2-2]
3. In the **Go To:** field, enter: “//**computername**/**sharename**/” (where “computername” is the name of the computer being accessed and “sharename” is the name of the share that was designated under Step 4 of the previous section).
Example: “//ssllock17/Share/” [Figure 2-3]
4. Enter your Windows “username” and “password”, and then select **OK**. The **Domain** field should pre-populate with data entered on step 4 under “**Enabling MDS-CS in MDaemon**” at the beginning of this guide. Be sure to use an account that was given proper permissions under step 5 in the previous section “**File Sharing Setup**”. [Figure 2-4]
5. Your files will appear on the following screen. [Figure 2-5]

You can also access behind-the-firewall applications, such as CRM and SharePoint. Instructions may vary depending on the application being accessed.



Figure 2-1

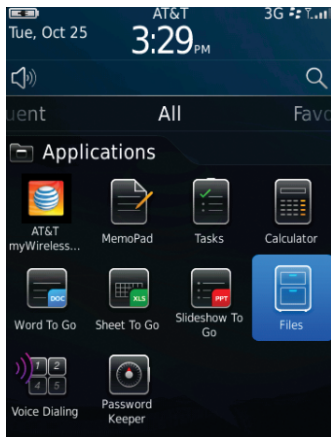


Figure 2-2

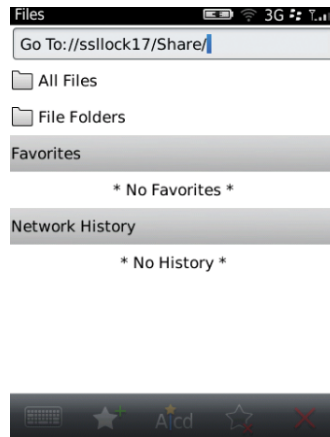


Figure 2-3

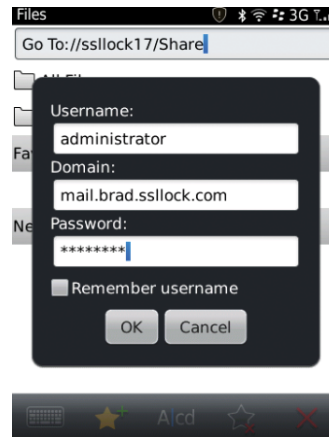


Figure 2-4

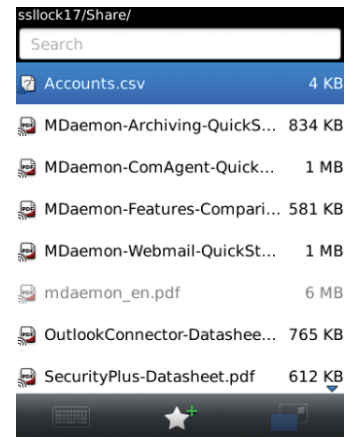


Figure 2-5